



A Brand of HYPERION

Hydraulic Elevator Jack Unit

Quotation Request Form

Required Date _____

Out of Service

Today's Date _____

Company _____

Contact _____

Address _____

Phone _____ Ext _____ Fax _____

City _____ St _____ Zip _____

Mobile _____

Project Name _____ St _____ Zip _____

Email _____

REQUIRED FOR QUOTE

Car Type

- Passenger
- Freight
 - Load Class A B C1 C2 C3
- In-ground Holeless
- Single Stage Telescopic 1:2 Roped
- Dual Jacks Cantilever

Jack Unit

- Complete Jack Unit
- Cylinder Only Piston Only
- With Head With Head & Flange
- Single Piece**
- Multi-Piece**
 - Longest Section _____ ft _____ in
 - Number of Section _____

Project Data

- Capacity _____ lbs
- Total Floor Travel _____ ft _____ in
- or No# of stops _____

For Replacement or Modernization

Existing Piston Diameter _____ in

ADDITIONAL INFO

Project Data

- Empty Car Weight _____ lbs
- Top Overtravel _____ in
- (with piston fully extended)
- Bottom Overtravel _____ in
- (Runby + Compression + Clearance)
- Overhead _____ ft _____ in

For Replacement or Modernization

- Piston Wall Thickness _____ in
- Piston Weight _____ lbs
- Total Gross Weight _____ lbs
- Car Speed _____ fpm
- Cylinder Diameter _____ in
- or Circumference _____ in
- Casing Inside Diameter _____ in
- Max. Operating Pressure _____ psi

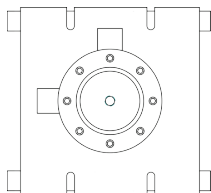
Outlet Information

Outlet Size _____ in

- Grooved (STD)
- NPT

Pit Channels to Outlet are

- Parallel
- Perpendicular



JACK UNITS

Cylinder Joint Type

- Threaded No Weld (thru 10")
- Threaded - Welded (thru thru 16")
- Slip Fit (thru 10")
- Butt Weld (All sizes)
- Buy American Requirement
- Seamless Piston
- Seamless Cylinder
- Piston Gripper Provisions
- Future Travel Stop Ring _____ in

CYLINDER PROTECTION

- Tape Wrap _____ Layers
- Epoxy Paint _____ Coat
- Sealed PVC Protection **or** Flexible Liner
 - Schedule 40 (Std)
 - Schedule 80
- Inspection Ports (Std) (Evacuation system and electronic leak monitoring not available with Flex Liner)
- Add-Ons:*
 - Evacuation System
 - Electronic Leak Monitoring System (Includes Evac System)

ACCESSORIES

- Spare Packing Set (per Jack Unit)
- Pit Channels **and/or** Buffers
- Platen Plate **or** Isolated Platen
- Strike Plates
- Scavenger System
- Pipe Rupture Valve
- Shut Off Valve _____ qty
- Isolation Coupling _____ qty
- PVC Lifting Clamps _____ qty
- Cylinder Lifting Clamps _____ qty
- Piston Clamps / Wrenches _____ qty
- Telescopic Steadier Brackets _____ qty

REQUIRED FOR ENGINEERING

Site Survey

- A. Pit Depth _____ ft _____ in
- B. Total Platform Height _____ in
- C. Bolster Height _____ in
- D. Platen Plate Thickness _____ in
- E. Outlet Location _____ in
- F. Pit Channel Height _____ in
- G. Distance Between Channels _____ in
- H. Bolster Outside Dimension _____ in
- J. Strike Plate Thickness _____ in

If Holeless

- K. Platen Isolation Thickness _____ in
- L. Pick Up Point _____ ft _____ in

SPECIAL REQUIREMENTS

