



*Elevator Equipment Corporation*

*"Simplicity in Motion"*



**LIMITED-USE / LIMITED APPLICATION  
ELEVATOR**



## APPLICATION

Today's growing awareness of the need for greater accessibility, as well as legislation such as the Americans with Disabilities Act, has created a growing demand for functional, convenient, and affordable elevator systems. EECO Home has taken those needs one step further to offer you Limited Use / Limited Application (LULA) elevators that can be integrated into your existing architecture and offer the quality and style that only EECO Home can provide.

The EECO Home LULA Elevator can be used in churches, schools, libraries, small businesses, multi-family housing and other buildings, where permitted by state and local code. It is the product of years of experience and research combined to provide you with the affordable solution to your accessibility needs.



Vandal Resistant Buttons  
Car Operating Panel

The EECO Home LULA elevator exceeds safety codes as established by ASME A17.1/CSA B44. The elevator carries a full one-year warranty on materials and workmanship and has proven reliability and durability with guaranteed quality backed by over 65 years in the commercial elevator industry. Our Hydraulic Elevators are built with dependable quality to last a lifetime. We invite you to compare the LULA elevator to any competitor, and you will find this elevator superior in *design, quality, and workmanship*.

## KEY FEATURES

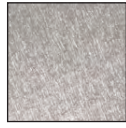
- Standard car size is 18 square feet, 3'-6" wide by 5'-0" deep
- Commercial grade components & fixtures
- Standard or customized cab interiors
- Rigid frame & car construction
- Computer controlled operation
- Engineered with safety & emergency features to ensure rider safety
- "Holeless" design means no excavation for the hydraulic cylinder required
- Two-speed automatic car doors with integrated hoistway doors
- Electromechanical interlocks prevent elevator movement while doors are open & prevent hallway doors from opening while the car is not at a landing
- A battery powered safety descent system lowers the car in the event of a power failure to prevent entrapment

# ELEVATOR CAB OPTIONS

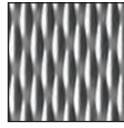
## STAINLESS STEEL FLAT METAL CABS



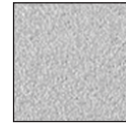
#4 Brushed



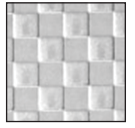
Non-Directional



5 WL



Sand-Tex

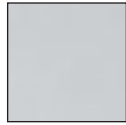


Squares

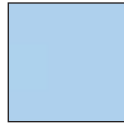
## POWDER COAT FLAT METAL CABS



Vanilla



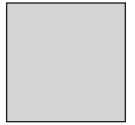
Alpine Grey



Sky Blue



Fresh Mint

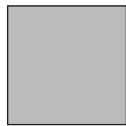


Primed

## PAINTED FLAT METAL CABS



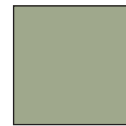
Shamrock White



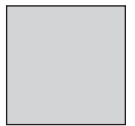
Pebble Grey



Waterfall Blue

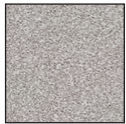


Sage Green



Primed

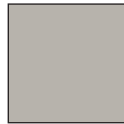
## SOLID COLOR PLASTIC LAMINATE CABS



Grey Stone



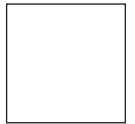
Papyrus



Platinum Grey

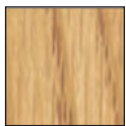


Almond

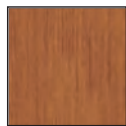


Custom

## WOOD GRAIN PLASTIC LAMINATE CABS



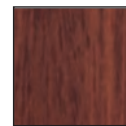
Natural Oak



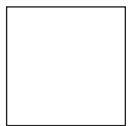
Wild Cherry



Walnut



Mahogany



Custom

## UNFINISHED VENEER CABS



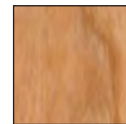
Birch



Maple



Red Oak



Cherry



Mahogany

## RAISED PANEL - REVEALS (CHOOSE COLOR FROM ABOVE FOR PANEL COLOR)



Stainless Steel



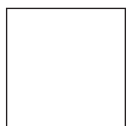
Brushed Bronze



Black



Primed



Custom



# ELEVATOR GATE OPTIONS

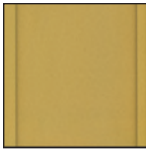
## ACCORDION METAL PANELS



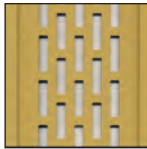
Solid Aluminum



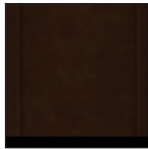
Perf. Aluminum



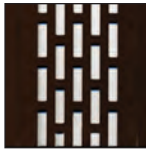
Solid Brass



Perf. Brass

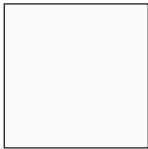


Solid Bronze

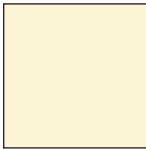


Perf. Bronze

## ACCORDION LAMINATE SOLID COLOR PANELS



White



Tan



Chalk



Grey

## ACCORDION LAMINATE WOOD GRAIN PANELS



Birch



Maple



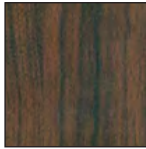
Oak



Cherry



Mahogany



Walnut

## ACCORDION FINISHED VENEER PANELS



Birch



Maple



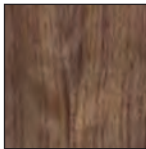
Oak



Cherry



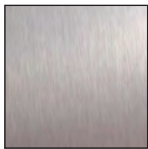
Mahogany



Walnut

# ELEVATOR FIXTURE OPTIONS

## FIXTURE FINISHES



Stainless Steel



Brushed Bronze



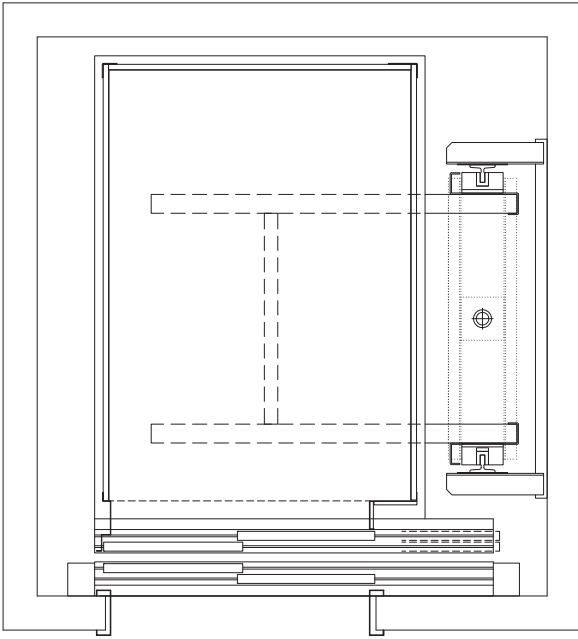
Primed



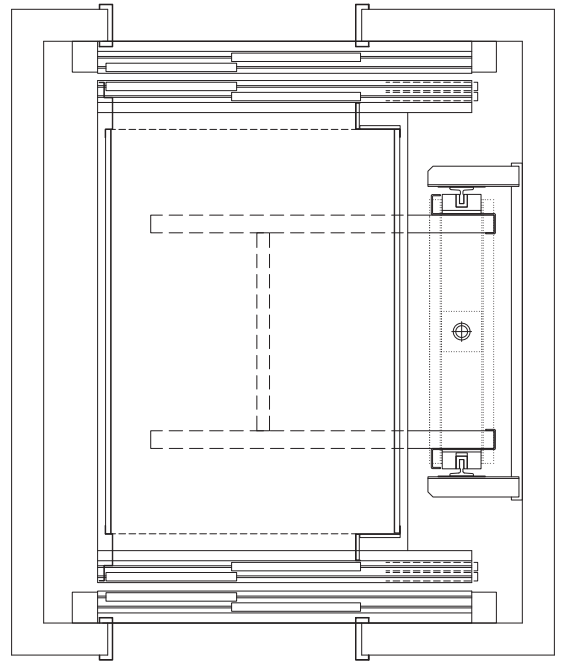
Custom

# SPECIFICATIONS

## TYPICAL PLAN VIEWS



Front Opening  
Plan View



Front and Rear Opening  
Plan View

Shown with Standard Two Speed Automatic Doors

## PERMITS & INSPECTION

The work required under these specifications is limited to furnishing and installing a complete Hydraulic Elevator System which meets or exceeds the Safety Standards set by ASME A17.1/CSA B44, for Limited Use / Limited Application Elevators. The Elevator Contractor shall obtain and pay for necessary Municipal or State Inspections and Permits, as required, and make tests as called for by the regulation of such Authorities.

## WARRANTY

The EECO Home LULA carries with it a one year limited warranty wherein the elevator contractor will replace any part found to be defective during this time. Damages caused by improper use or due to improper care is not warrantied.

# SPECIFICATIONS

## Obligations by Owner

- Suitable fire rated hoistway conforming to local building code & ASME A17.1/CSA B44
- Suitable guide rail mounting supports
- A 5' x 6' fire rated machine room with 7' overhead and 3' x 6'-8" B rated self-closing, self-locking access door
- Fire extinguisher in machine room
- 220 volt, single phase 60 hertz power supply terminated in a 3 pole fused disconnect switch located adjacent to the elevator controller
- 115 volt light and GFIC outlet in the hoistway and machine room
- Telephone line to machine room
- All cutting, patching, finishing, and finished flooring
- All work by others must comply with applicable codes

## LULA Standard Systems & Machinery

Capacity:	1400 pounds
Speed:	30 feet per minute
Travel:	Up to 25'
Stops:	Up to five stops
Openings:	Front, rear or side
Machine Types:	Direct Acting Hydraulic Roped Cantilever Hydraulic
Minimum Pit Depth:	3'-6" (could be less if required)
Minimum Overhead:	10'-10" above the top landing
Power Supply:	220 volts 1-phase 60 cycle
Car Design:	Plastic Laminate Cab
Car Size:	3'-6" wide x 5'-0" deep
Car Door:	Two-speed automatic
Control System:	One button collective
Hoistway Doors:	3'-0" wide x 6'-8" high

## Power Unit

- Self-contained within a structural steel outer shell
- Oil reservoir
- Oil hydraulic pump
- Submersible electric motor
- Oil dipstick
- 4 coil hydraulic control valve
- Low pressure switch
- 0-1000 psi pressure gauge
- Tank shut-off valve

## Hydraulic Jack Unit

- Jack Unit sized to lift the load to the height specified
- Factory tested
- Internal guide bearing
- Packing
- Drip ring

## Guide Rails

- 8 lb. t-rail, erected plumb, and securely fastened

## Microprocessor Elevator Controller

- Control program contained in nonvolatile, programmable, read only memory
- Safety circuits monitored and controlled by the programmable logic control

## Landing System

- Tape selector landing system
- Leveling and slowdown within ¼" of the landing
- Mounted in hoistway

## Single Automatic Push Button Operation

- Elevator operated by appropriately labeled push buttons
- Pressing the car operating panel or hall station button shall bring the car to the desired landing

## Car Frame & Platform

- Car frame made of structural steel members
- Equipped with guide shoes
- Platform made of two ½" wood core construction, backed with fire retardant paint

## Car Enclosure

- Walls made of ¾" wood core construction faced and backed with fire retardant laminate
- Car ceiling is suspended Lexan panels with fluorescent lights
- Exhaust Fan
- One #4 stainless steel handrail will be provided
- Fixtures come standard with #4 stainless steel finish
- Provided fixtures include:
  - Car operating panel containing call buttons, emergency light, hands free ADA phone, digital position indicator, and light/fan switch
  - Car directional indicator
- Accordion gate optional

## Hoistway Doors & Frames

- 1-½ hour fire rating
- Include integral electromechanical interlocks
- Infrared door curtain provided
- Hall stations for each landing provided
- Hoistway swing door optional

## Emergency Provisions

- Overspeed Governor or Pipe rupture valve (as required)
- Emergency stop switch
- Alarm bell with an alarm button
- Emergency lighting
- Battery back up lowering

**Manufacturers dimensions are subject to change without notice. Before beginning construction, please contact EECO Home or your EECO Home dealer.**