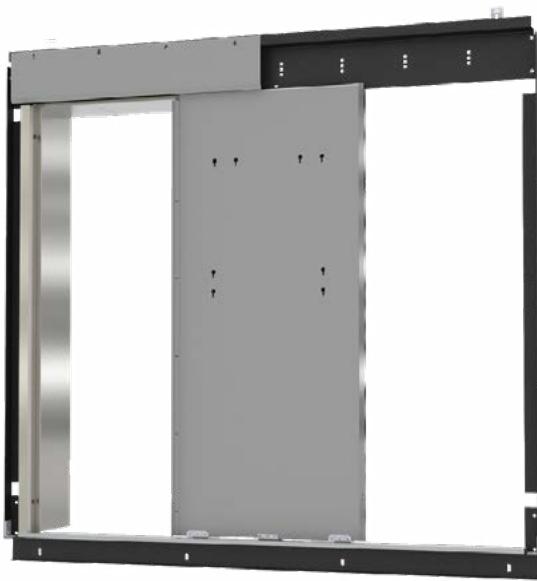


EECO manufactures Elevator Entrances & Doors

Elevator Equipment Corporation has expanded our product line to include UL Approved Doors & Entrances. They come in various finishes, manufactured in our Los Angeles, California and Richmond, Indiana facilities. EECO provides nationwide sales and support.

[More information on Doors & Entrances](#)



Hoistway View



Hallway View



Single Speed



Center Opening

[Request a Quote](#)

EECO Doors and Entrances Details

Door Frames:

- Units come with knocked-down frames for shipping.
- Save on installation costs
- Adjustable 7 gauge sill angle included
- Set of "Z" brackets from bottom of frame to sill angle, holds a rigid clear opening

Complete unit frame consists Of U.L. approved:

- Door, sight guards, gibs, door retainer brackets, and fire tabs
- 14 ga frames-prime or stainless
- Set of strut angles
- Standard aluminum sill
- Dust cover plate
- Fascia plates available
- Hardware
- Units drilled to manufacturer's equipment



Door sizes:

- Single Speed - Up to 48" x 84"
- Center Opening – Up to 48" x 84"
- 2 Speed Handed – Up to 48" x 84"
- 2 speed Center Opening – Up to 96" x 84"

Finishes Available:

- Primed
- #4 Stainless
- Powder Coat
- Other finishes available, Call EECO

Sill Options:

- Aluminum
- Nickel Silver
- Stainless Steel

Hall Doors & Entrances are
UL Fire Rated



File # R7883



File # R13907

Request a Quote

[Contact Us](#) • [Visit our Website](#)

(888) 577-3326 • sales@eecomail.com • www.elevatorequipment.com