

HYDRAULIC ELEVATOR JACK UNIT

QUOTATION REQUEST FORM

Date _____

Required Date _____ **Out of Service**

Company _____ Contact _____
 Address _____ Phone _____ Ext. _____ Fax _____
 City _____ St. _____ Zip _____ Cell Phone _____
 Project Name _____ St. _____ Zip _____ Email _____

CAR TYPE

- Passenger
- Freight
 - Load Class A B C1 C2 C3
- In-ground Holeless
- Single Stage Telescopic 1:2 Roped
- Dual Jacks Cantilever

PROJECT DATA

Capacity _____ lbs
 Empty Car Weight _____ lbs
Total Floor Travel _____ ft _____ in
 Top Overtravel _____ in
 (with piston fully extended)
 Bottom Overtravel _____ in
 (Runby + Compression + Clearance)
 Overhead _____ ft _____ in

If Replacement or Modernization

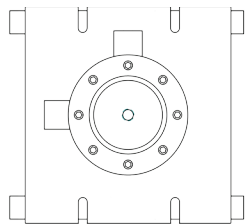
Existing Piston Diameter _____ in
 or Circumference _____ in
 Piston Wall Thickness _____ in
 OR
 Piston Weight _____ lbs
 Total Gross Weight _____ lbs
 Car Speed _____ fpm
 Cylinder Diameter _____ in
 or Circumference _____ in
 Existing Casing Inside Diameter _____ in
 Max. Operating Pressure _____ psi

Outlet Size _____ in

- Grooved (Std)
- NPT

Pit Channels to Outlet are

- Parallel
- Perpendicular



Special Requirements _____

JACK UNIT

Quantity Required _____

- Complete Jack Unit
- Cylinder Only Piston Only
 - with Head with Head & Flange
- Single Piece**
- Multi-Piece**
 - No. of Sections _____ or
 - Longest Section _____
 - Cylinder Joint Type
 - Threaded No Weld (thru 10")
 - Threaded - Welded (thru 16")
 - Slip Fit (thru 16")
 - Butt Weld (All sizes)
- Seamless Piston Seamless Cylinder
- Tape Wrap _____ Layers
- Epoxy Paint _____ Coats
- Sealed PVC Protection
 - Schedule 40 (Std) Schedule 80
 - Flush Threaded Joints (Sch 40 Only thru 12")
- Inspection Ports (Std) Evacuation System
- Electronic Leak Monitoring System
- Flexible Liner
- Corrosion Prevention Compound Provisions
- Piston Gripper Provisions
- Future Travel Stop Ring _____ in
- Use with Biodegradable Oil (Vegetable)

ACCESSORIES

- Spare Packing Set (per Jack Unit)
- Pit Channels &/or Buffers
- Platen Plate or Isolated Platen
- Strike Plates
- Scavenger System
- Oil Line Fittings (Specify details below)
- Pipe Rupture Valve _____ qty
- Shut Off Valve _____ qty
- Isolation Coupling _____ qty
- PVC Lifting Clamps _____ qty
- Cylinder Lifting Clamps _____ qty
- Piston Clamps / Wrenches _____ qty
- Telescopic Steadier Brackets _____ qty

SITE SURVEY

Pit Depth _____ ft _____ in **A.**
 Total Platform Height _____ in **B.**
 Bolster Height _____ in **C.**
 Platen Plate Thickness _____ in **D.**
 Outlet Location _____ in **E.**
 Pit Channel Height _____ in **F.**
 Distance Between Channels _____ in **G.**
 Bolster Outside Dimension _____ in **H.**
 Strike Plate Thickness _____ in **J.**

IF HOLELESS

Platen Isolation Thickness _____ in **K.**
 Pick Up Point _____ ft _____ in **L.**

