

SUBMERSIBLE POWER UNITS

DESCRIPTION OF A SUBMERSIBLE POWER UNIT

EECO Submersible Power Units are designed with the directly connected pump and motor submerged in the oil reservoir. An EECO Silencer is located between the pump and the control valve as standard. The control valve and an optional muffler or dampener are mounted in the tank above the maximum oil level, providing access for valve adjustment. These components can also be located above the tank when greater oil capacity is required.

Submersible pumps and motors are less costly than comparable air cooled components and are designed to allow for quick and easy installation. The insertion of the pump and motor in the oil helps to dampen noise generated during operation.

Because the pump and motor are directly connected, the pump output flow rate is a result of the speed (RPM) of the motor. Therefore, the output flow rate is a consequence of available pump sizes.

COMMERCIAL SUBMERSIBLE POWER UNITS

Standard Features

- EECO UV5-BT Control Valve
- EECO Silencer
- Thermal Switch (Preset To 145°F)
- Isolation Anchoring System
- Oil Level Liquid Gauge
- 80 Starts Per Hour
- Pressure Gauge Fitting with 1/8" Shut Off Valve

Available Options

- Valve Return Filter (VRF)
- 120 Starts Per Hour
- Tank Mounted Starter Enclosure
- Motor Starter
 - Wye-Delta
 - ATL
 - Solid State
- Adjustable Load Weighing Switch
- EECO Muffler
- EECO Highly Effective Dampener
- Oil Heater
- Maxton Control Valves
- Low Pressure Switch
 - N.O
 - N.O./N.C.
- Viscosity Switch
- Low Oil Switch
- Hand Pump
- OSHPD Approved Anchoring System
- Constant Down Speed
- Pre-Wired (JBox and Terminals)
- Charcoal Breather

Flat Bottom Commercial Power Units

EECO Commercial Flat Bottom Submersible Power Units are available in two depths, 18" and 24". The 18" power units are the most compact and are particularly useful where Machine Room space is at a premium. They are lightweight for ease of handling, very quiet, and highly efficient. They are also our most economical units. EECO can also design and manufacture fully customized power units per the customer's specifications.

Model	Dimensions in Inches(in)							Gallons(gal)		
	Dimensions in Centimeters(cm)							Liters(lit)		
	A	B	C	D	With UV-5			Usable Oil	Charge Oil	Total
				E	F	G				
SPUC-36	37.00	18.75	38.00	44.50	32.00	5.75	6.50	41	35	76
	(94.0)	(47.6)	(96.5)	(113.0)	(81.3)	(14.6)	(16.5)	(155)	(132)	(288)
SPUC-48	49.00	18.75	38.00	56.50	32.00	5.75	6.50	54	47	101
	(124.5)	(47.6)	(96.5)	(143.5)	(81.3)	(14.6)	(16.5)	(204)	(178)	(382)
SPU-36	37.00	24.75	46.00	41.00	32.00	16.00	8.15	54	69	123
	(94.0)	(62.9)	(116.8)	(104.1)	(81.3)	(40.6)	(20.7)	(204)	(261)	(466)
SPU-48	49.00	24.75	46.00	52.75	40.00	16.00	8.15	73	92	165
	(124.5)	(62.9)	(116.8)	(134.0)	(101.6)	(40.6)	(20.7)	(276)	(348)	(625)

Technical drawings showing top and side views of the submersible power unit. Labels include: 2.50" Typical all (4) corners, 1.50, 7/8" Hole for Anchor Bolt, Hinged Cover, Optional Right Hand, Silencer, Valve, Optional Right Hand, Pump, Motor, and dimensions A, B, C, D, E, F, G.

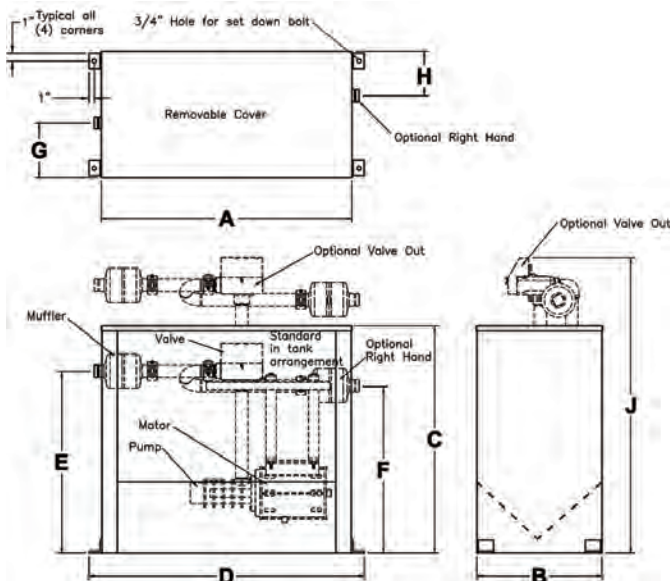
SUBMERSIBLE POWER UNITS CONT'D

V-Bottom Commercial Power Units

EECO's Commercial V-Bottom Submersible Power units are available in 60", 72", 84", and 96" lengths and are 24" deep. Usable oil volumes range from 71 gal. to 180 gal. depending on size and configuration.

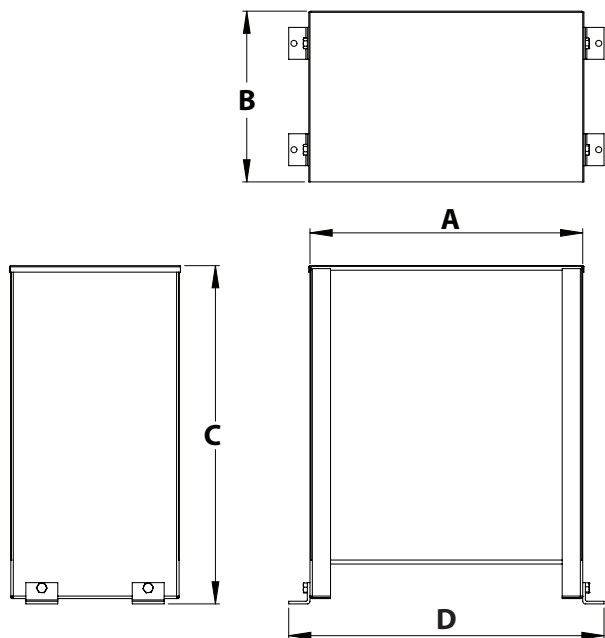
Model	Dimensions in Inches (in)													
	Dimensions in Centimeters (cm)													
	A	B	C	D	With UV-5AT					With UV-7B				
					E	F	G	H	J	E	F	G	H	J
SPU-60	60.25	24.00	44.00	64.50	38.00	34.88	10.50	8.50	56.00	35.25	35.25	9.63	9.63	58.00
	(153.0)	(61.0)	(111.8)	(163.8)	(96.5)	(88.6)	(26.7)	(21.6)	(142.2)	(89.5)	(89.5)	(24.4)	(24.4)	(147.3)
SPU-72	72.25	24.00	44.00	76.50	38.00	34.88	10.50	8.50	56.00	35.25	35.25	9.63	9.63	58.00
	(183.5)	(61.0)	(111.8)	(194.3)	(96.5)	(88.6)	(26.7)	(21.6)	(142.2)	(89.5)	(89.5)	(24.4)	(24.4)	(147.3)
SPU-84	84.25	24.00	44.00	88.50	38.00	34.88	10.50	8.50	56.00	35.25	35.25	9.63	9.63	58.00
	(214.0)	(61.0)	(111.8)	(224.8)	(96.5)	(88.6)	(26.7)	(21.6)	(142.2)	(89.5)	(89.5)	(24.4)	(24.4)	(147.3)
SPU-96	96.25	24.00	44.00	100.25	38.00	34.88	10.50	8.50	56.00	35.25	35.25	9.63	9.63	58.00
	(244.5)	(61.0)	(111.8)	(254.6)	(96.5)	(88.6)	(26.7)	(21.6)	(142.2)	(89.5)	(89.5)	(24.4)	(24.4)	(147.3)

Model	Capacities in Gallons (gal)									
	Capacities in Liters (lit)									
	Usable Oil					Oil Required to Fill Tank				
	With UV-5AT		With UV-7B			With UV-5AT		With UV-7B		
	Valve in Tank LH	Valve in Tank RH	Valve Out	Valve in Tank	Valve Out	Valve in Tank LH	Valve in Tank RH	Valve Out	Valve in Tank	Valve Out
SPU-60	91.00	71.00	112.00	71.00	112.00	159.00	139.00	205.00	139.00	205.00
	(344)	(269)	(424)	(269)	(424)	(602)	(526)	(776)	(526)	(776)
SPU-72	109.00	86.00	135.00	86.00	135.00	190.00	167.00	246.00	167.00	246.00
	(413)	(326)	(511)	(326)	(511)	(719)	(632)	(931)	(632)	(931)
SPU-84	127.00	100.00	157.00	100.00	157.00	222.00	195.00	287.00	195.00	287.00
	(481)	(379)	(594)	(379)	(594)	(840)	(738)	(1086)	(738)	(1086)
SPU-96	145.00	114.00	180.00	114.00	180.00	253.00	222.00	328.00	222.00	328.00
	(549)	(432)	(681)	(432)	(681)	(958)	(840)	(1242)	(840)	(1242)



SUBMERSIBLE POWER UNITS CONT'D

Residential, LULA, and MRL Submersible Power Units



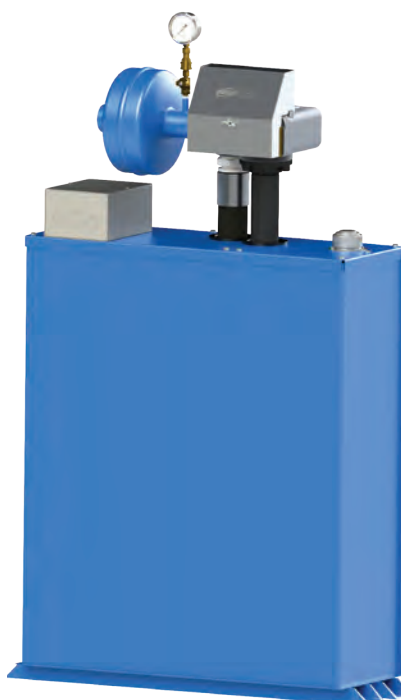
Model	Dimensions in Inches(in)				Gallons(gal)
	Dimensions in Centimeters(cm)				Liters(lit)
	A	B	C	D	Usable Oil
RPU	25.00	16.00	29.75	28.00	20
	(63.8)	(40.6)	(58.4)	(71.5)	(76)
LPU	36.00	16.00	31.50	40.00	15
	(91.4)	(40.6)	(80.0)	(101.6)	(57)
MPU	31.00	11.25	52.75	34.75	33
	(78.7)	(28.3)	(134.3)	(88.0)	(125)



Residential Power Unit (RPU)



LU/LA Power Unit (LPU)



MRL Power Unit (MPU)